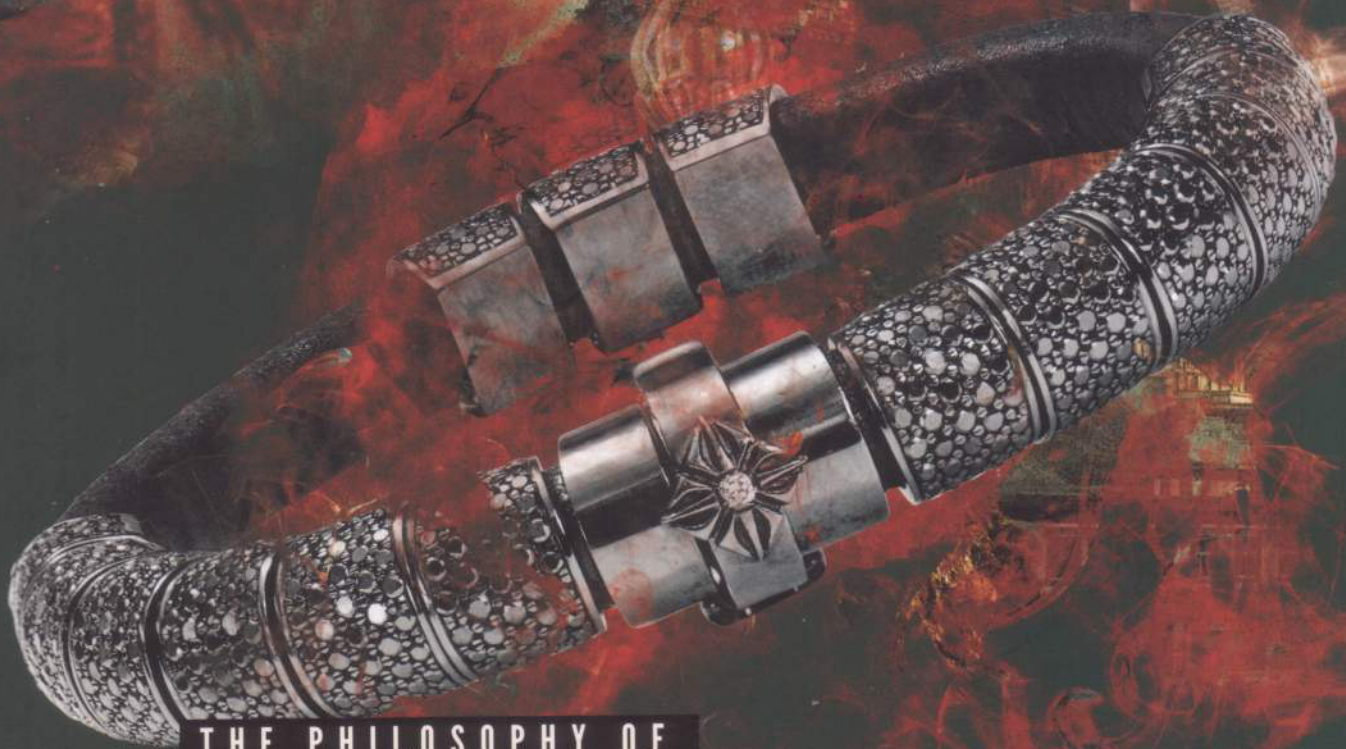


ISSUE

.07

ORACLE



THE PHILOSOPHY OF
SHAMBALLA

- Cool Tech -

/ PATEK PHILIPPE'S MASTERPIECE \

- Bentley -

- Salon QP Highlights -

To be adjusted every 2 million years



The phases of the moon have always fascinated mankind. The moon governs the tides, sowing and harvesting.

Unfortunately, the lunar phase cycle is not in sync with our calendar: On average, it is 29.530588 days. Hence, for a precise phase of the moon, watchmakers would need cog wheels with fractions of teeth. Or have the clever idea to use prime numbers of teeth and drive the moon disc continuously.

The Sauterelle à lune perpétuelle only uses four components to achieve a rate of error of one day in 2'060'757 years. It is the most precise phase of the moon ever built. And by some margin: Approximately 2'050'000 years.

Of course, the Sauterelle à lune perpétuelle also features Andreas Strehler's unique Remontoir d'égalité.



ANDREAS STREHLER
UHRMACHER

www.astrehler.ch